



THE  
*Roosevelt* II

3,126 total sq.ft.

*featuring*

For more info, please contact John Gabriel,  
Licensed Real Estate Salesperson, at:

(m) 845.222.0751

(o) 845.227.4400 EXT.339

(e) JGABRIEL@HOULIHANLAWRENCE.COM

- ✦ Spacious 4 bedroom/den/study design
- ✦ 2.5 bath
- ✦ Master bedroom with master bath/sitting area
- ✦ Open floor plan
- ✦ Vaulted & tray ceilings
- ✦ Mudroom
- ✦ Second floor laundry room

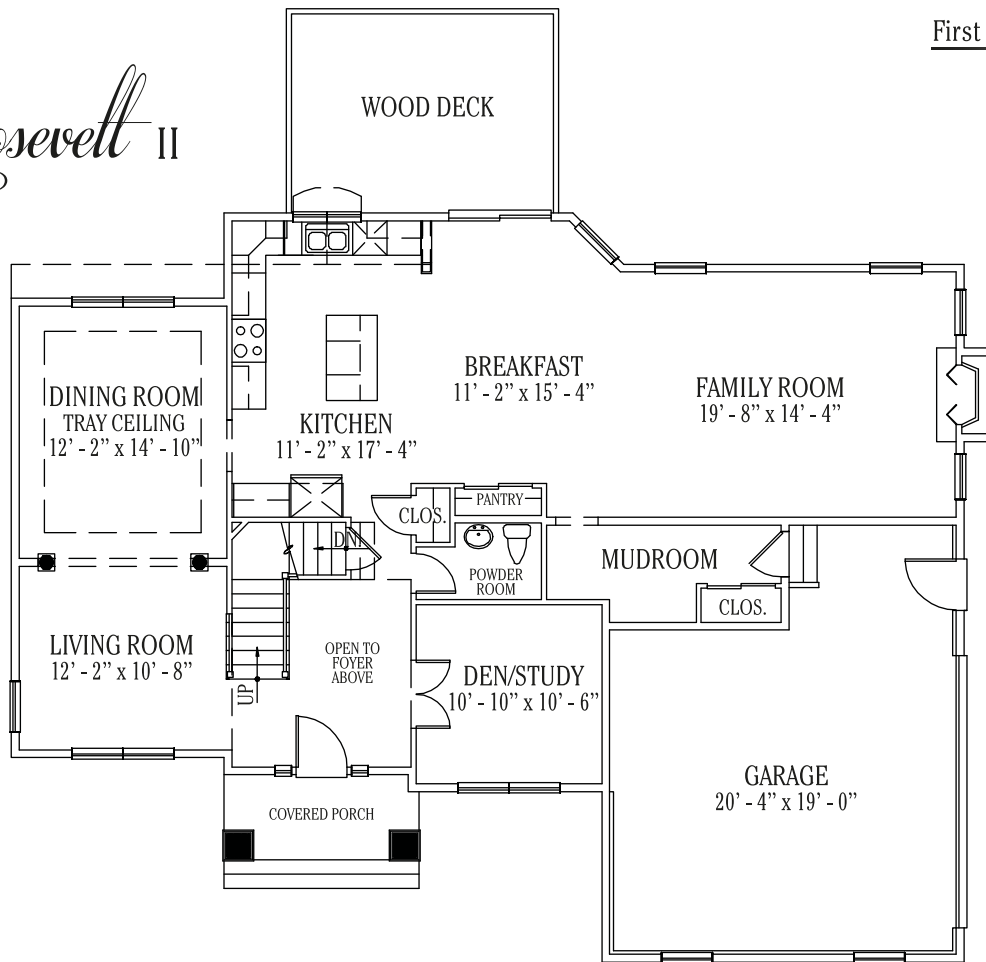
*Builders who actually build your home!*

[www.MIDHUDSONDEVELOPEMENT.com](http://www.MIDHUDSONDEVELOPEMENT.com)

Artist's concept. Elevations, renderings, floor plans and dimensions are approximate and subject to change without notice.

# THE Roosevelt II

## First Floor



## Second Floor

